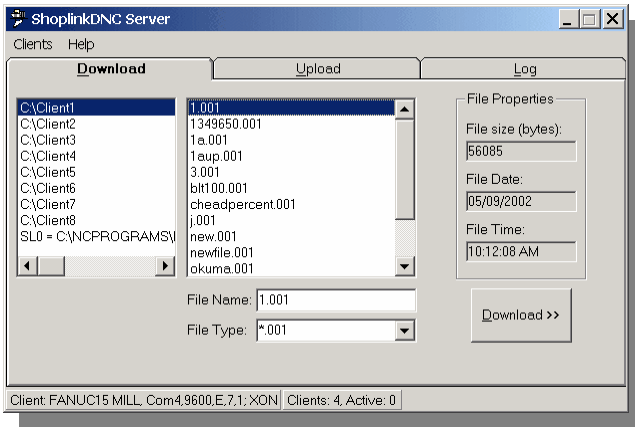


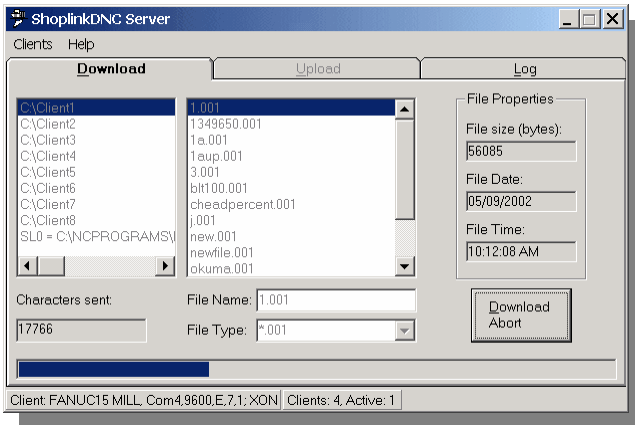
SHOPLINKDNC SERVER

HIGHLAND DNC, LLC.
classic ShopLink dnc solutions



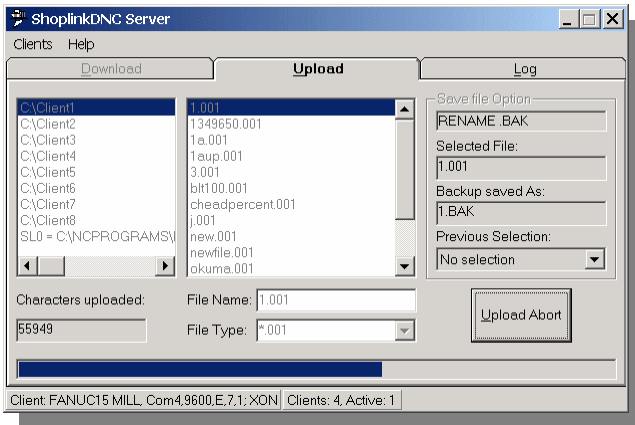
ShoplinkDNC Server

- Designed for Microsoft Windows XP, Vista, 7
- Use standard com ports with all multi-port com boards, Ethernet, 802.11 Wireless AND **ShopLink LOW COST Wireless Bluetooth**
- Multi-tasking for simultaneous transfers
- Compatible with Shoplink legacy operation
- Terminal support for Shoplink terminal mode products and CNC's with terminal mode
- Compatible with all serial CNC's and CNC\NC requiring BTR's



Download

- Manual downloading through application interface
- ShopLine Terminal, DNC Window\Edit buffer and BTR Terminal download initiation
- Remote mode download initiation from CNC
- Drip feed and Drip feed with block offset via manual, Remote mode or terminal operation
- Download to any CNC using Terminal mode or Remote mode
- Any PC on the network can initiate downloads with DNCAdmin application



Upload

- Manual uploading through application interface
- ShopLine Terminal, DNC Window\Edit buffer and BTR Terminal upload initiation
- Remote mode upload initiation from CNC
- Remote mode upload verification initiated from CNC using upload report
- Upload from any CNC using Terminal mode or Remote mode
- Any PC on the network can initiate uploads

The screenshot shows the 'Log' tab with a table of activity. The table has columns for Date, Time, File, Status, and Client.

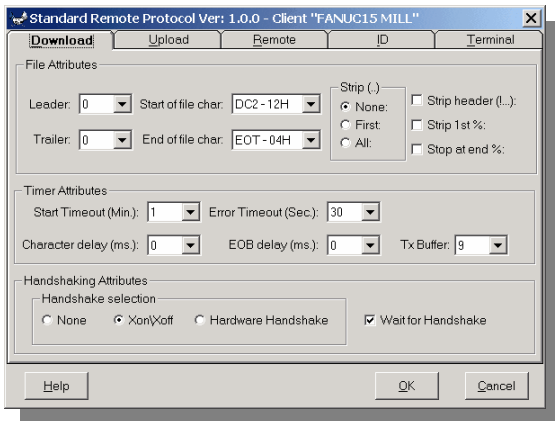
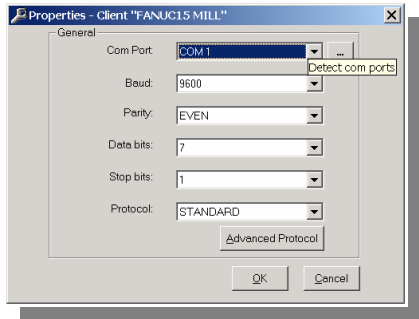
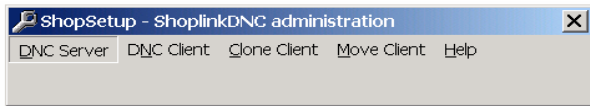
Date	Time	File	Status	Client
7/5/2002	6:32:24 PM	C:\Client1\1.004	!MT Download Abort	YASNAC MILL
7/5/2002	6:32:19 PM	C:\Client1\1.004	Start Download	YASNAC MILL
7/5/2002	6:32:13 PM	C:\Client1\1.003	!MT Download Abort	MORI SEKI MILL
7/5/2002	6:32:07 PM	C:\Client1\1.003	Start Download	MORI SEKI MILL
7/5/2002	6:32:02 PM	C:\Client1\1.002	!MT Download Abort	FANUC21 LATHE
7/5/2002	6:31:55 PM	C:\Client1\1.002	Start Download	FANUC21 LATHE
7/5/2002	6:07:28 PM	C:\Client1\new.001	!Timeout no xfer	FANUC15 MILL
7/5/2002	6:06:24 PM	C:\Client1\new.001	Start Download	FANUC15 MILL
7/5/2002	6:06:08 PM	C:\Client1\1.001	Download OK	FANUC15 MILL
7/5/2002	6:04:43 PM	C:\Client1\1.001	Start Download	FANUC15 MILL
7/5/2002	5:26:08 PM	C:\Client1\1.001	56038 Chars	FANUC15 MILL
7/5/2002	5:24:47 PM	C:\Client1\1.001	Start Upload	FANUC15 MILL

Logging

- Logging of all Downloads, Uploads and completion messages
- Log stored in Access Database for query and report generation

SHOPLINKDNC SERVER

HIGHLAND DNC, LLC.
classic ShopLink dnc solutions



ShopSetup - ShoplinkDNC administration

- Point and click configuration menu's
- Intuitive Client CNC port setup
- One click Client port duplication (cloning)
- One click moves a Client to another Server
- Fully documented in "Help" files

Download

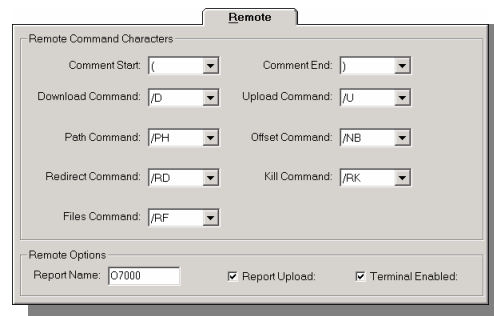
- Download attributes available on single tab

Upload

- Upload attributes available on single tab
- Automatic extension handling on uploads

Remote

- Remote attributes available on single tab



ID

- Open architecture 'transaction file' format for user designed interfaces and feature extension

Terminal

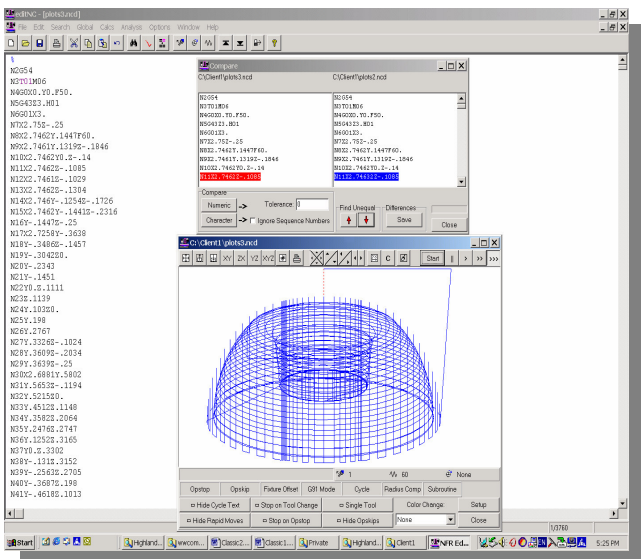
- Shop, Line and remote terminal interface

Support

- Designed and supported by Highland DNC, LLC.
- On site, telephone and email

editNC

- Integrated full featured NC code editor
- Programming calculators
- Back plotter
- File comparison
- Block offset for restarting



Highland DNC, LLC. 30711 Saddlebag Trail, Myakka City, FL. 34251
PH. 941-322-2286 FAX. 941-322-2287

QUESTIONS? EMAIL INFO@HIGHLANDDNC.COM